

# CAVIUS

## WIRELESS

ALARM FAMILY

# HEAT

# ALARM



Thermal heat alarm device  
Commercial reference: 3103-003  
Developed by CAVIUS

This Thermal Heat Alarm is designed for areas not suitable for smoke alarms due to high risk of false alarms such as; kitchens, garages or workshops.

**PLEASE READ THE USER GUIDE CAREFULLY BEFORE INSTALLATION AND RETAIN FOR FUTURE USE.**

### TECHNICAL INFORMATION

Cavius heat alarm detects:

- 1) rapidly increased temperature level
- 2) absolute heat level of 58 degrees C.

The maximum number of alarms that can be interlinked within a house group are 32.

**Please note:** These must be alarms from the CAVIUS

### WIRELESS

ALARM FAMILY

The distance between interlinked alarms depends on the house layout and they should always be tested after installation. It is not advised to get more than 10m distance between two alarms.

Diameter: 65mm. Height: 44mm.

The alarm is powered by a replaceable 3v CR123A lithium battery. Please note that correct operation of the heat alarm device is ensured by use of one of the following batteries: DURACELL, PANASONIC or HUIDERUI.

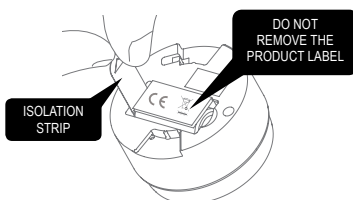
Interlinked by RF: 868 MHz.

Complies to standards: EN54-5 class A1/R, EN300-220.



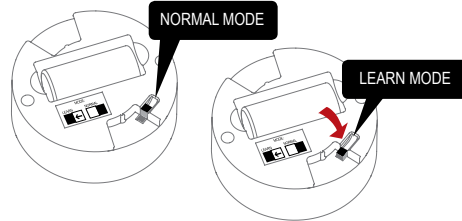
### 1. HOW TO SET UP AND CONNECT ALARMS:

Start by pulling out the battery isolation strip as shown.



**Please note:** The product label must not be removed as it contains important information regarding the product.

All alarms that need to be connected in the house should be put into 'Learn Mode' by sliding the switch on the back of the alarm to the 'Learn Mode' position.



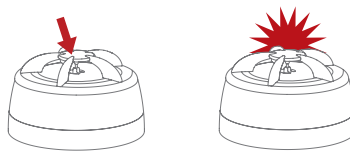
The red LED will light up to indicate that 'Learn Mode' has been selected.



Please note that when the alarms are placed in 'Learn Mode' they can't be inserted into the mounting base.

Do not take out the battery during 'Learn Mode' as this will interrupt the learn process.

Press and hold the test button at one alarm only, until it beeps and the LED flashes. This alarm will become the master and will start sending out a specific house code to the other alarms.



As the other alarms receive the specific house code, they will also flash the LED light.

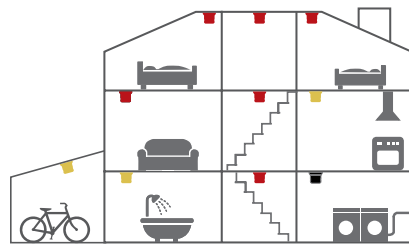


When all alarms flash the red LED, they are connected and can be switched out of 'Learn Mode' and installed.

### 2. THE BEST AREAS TO INSTALL THE HEAT ALARM:

- Areas not suitable for smoke alarms due to high risk of false alarms
- Kitchen area
- Bathroom
- Garage or workshop

Additional alarms increase the security.



■ Minimum smoke alarms ■ Minimum heat alarms

### 3. AREAS WHERE NOT TO INSTALL HEAT-ALARMS:

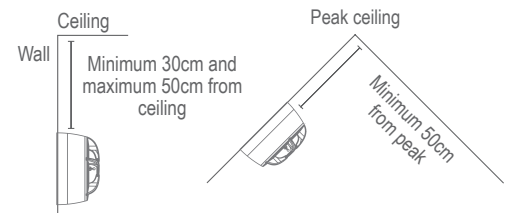
- In rooms where the temperature goes outside -10°C to +50°C.
- Bedrooms
- Lounge
- Dining room
- Hallway
- Family room

**NOTE:** In areas where smoldering fires occur over flaming fires, photoelectric smoke alarms are still the best to be installed.

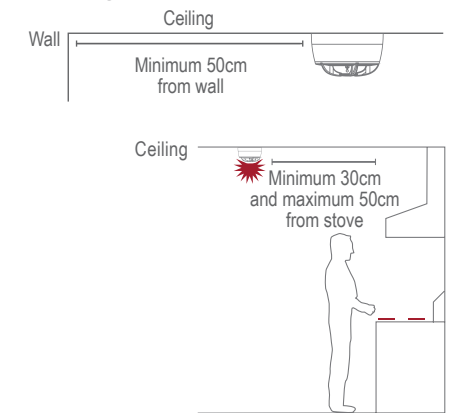
### 4. PLACEMENT:

The heat alarm is design to be installed on a ceiling or wall. Do not install too close to the oven/hob/stove (see drawing).

#### For wall installation:

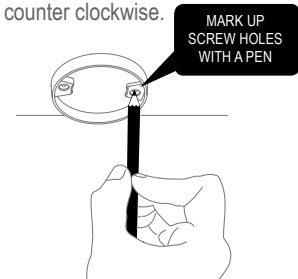


#### For ceiling installation:

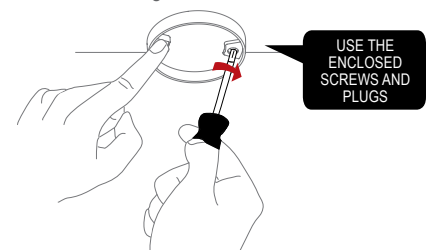


### 5. INSTALLING THE HEAT ALARM:

Detach the alarm from the mounting base by twisting counter clockwise.

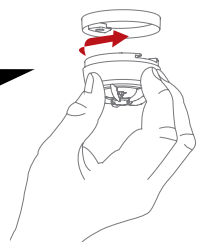


Use the mounting base ring to mark the screw holes on the ceiling or the wall.



Once the mounting base is installed, attach the alarm by twisting clockwise until it clicks. If the battery is either missing or inserted incorrectly, or the switch is in 'Learn Mode', the heat alarm will not be able to click into the mounting base.

CLICK THE HEAT ALARM FIRMLY INTO THE BASE TO LOCK



## 6. TEST FUNCTION:

After installation, and at least once per quarter, test all of your alarms to ensure they are operating correctly and are within range of each other.

It is recommended to check visually every week if the LED flashes correctly (every 48sec.)

Press the test button on any alarm for 2 sweeps of alarm signal 1 (--- --- ---) - Please refer to section 8. This will send out a test signal from the alarm; all other connected alarms should receive the signal within a short time. The alarms will emit a short beep and the LED will flash every 8 seconds for 2 minutes.

**NOTE:** Test function also allows to send a depleted RF signal to ensure an optimal operation in normal conditions.

When the test signal is sent out, the alarms will respond in two ways:

1. A single beep every 8 seconds indicates that the alarms are connected and functioning.
2. Three short beeps every 8 seconds indicates a heat sensor fault.

If required this indication can be stopped early on each alarm by a short press of the test button.

If the problem continues, please visit [www.cavius.com](http://www.cavius.com) for any trouble shooting.

## 7. NORMAL MODE:

In normal mode the LED will flash every 48 seconds to show correct operation.

## 8. ALARM MODE:

When a rapid and constant change of temperature is detected, the heat alarm will go into 'Alarm Mode'. It will sound the alarm signal and the LED will flash.

The heat alarm will also transmit the alarm signal to the other connected alarms, which will also sound the alarm signal after a short delay.

The CAVIUS Wireless Family have two different alarm signals:

**Alarm signal 1** (--- --- ---) is life threatening alarms, like a smoke alarm.

**Alarm signal 2** (- - -) is a non life threatening alarm, like a flooding alarm:

Smoke alarm signal: --- --- ---  
 Heat alarm signal: --- --- ---  
 Flood alarm signal: - - -  
 CO alarm low level signal: - - -  
 CO alarm high level signal: --- --- ---

Please note that only the originating alarm's LED will flash, so it can be identified.

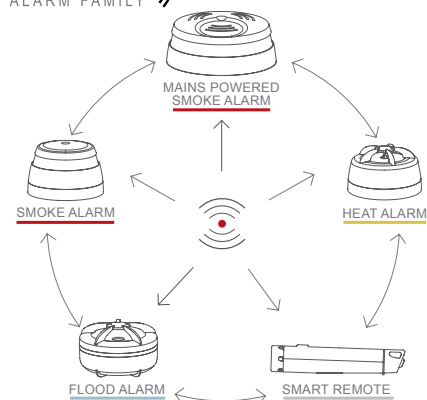
## 9. PAUSE/HUSH FUNCTION:

If the heat alarms are to set into a false alarm by cooking, fireplace, etc. they can be paused for 10 minutes by pressing the test button on the originating heat alarm only (indicated by the flashing LED).

The reason of this is that it is necessary to locate the source of the alarm before using the hush function. This is to make sure that it is not a life threatening situation.

## 10. ADD EXTRA DEVICE:

**WIRELESS** ALARM FAMILY



All CAVIUS interconnected alarms within the

**WIRELESS** ALARM FAMILY can be added to the system as they run on the same frequency and use the same data protocol. This means that the wireless system can consist of a combination of smoke, heat, flood etc.

Place all alarms into 'Learn Mode' and repeat section 1.

Always test connection to all devices by repeating test function section 6 after adding devices.

## 11. LOW BATTERY SIGNAL:

Your product has a 5Y battery life. When the battery is starting its end of life, a short beep will sound out every 48 seconds for 30 days.

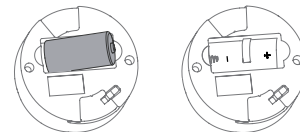
The alarm effected by the low battery will only beep, no other connected alarms will sound.

It is safe to change batteries in the alarms without going through the learn process again – they will not forget the codes during the battery change process.

## 12. BATTERY REPLACEMENT:

To replace the battery, detach the heat alarm from the mounting base by twisting counterclockwise. Replace the battery respecting the polarities.

Attach the alarm in the mounting base by twisting clockwise until it clicks, and test the alarm.



## 13. TROUBLE SHOOTING:

If you are experiencing false alarms with just general cooking, you may have your heat alarm too close to the cooking hobs and stove. Try reinstalling slightly further away to alleviate any issues.

If the heat alarm does not work when the test button is pushed, the probable cause is a faulty battery. Check if the battery is worn out and replace it. **Always test the alarm after replacement of battery.**

If the problem continues, please visit [www.cavius.com](http://www.cavius.com) for any trouble shooting.

## 14. OTHER INFORMATION:

Do not paint the alarm.

Disposal: For battery and product, please dispose properly at the end of life. This is electronic waste which should be recycled.

Note the local country regulations regarding installation.

The CE mark affixed to this product confirms its compliance with the European Directives which apply to the product.

Tested to comply to the standard of system heat alarms EN54-5 class A1/R.

Alarm condition aural signal pattern according to ISO 8201.



All Rights reserved: Cavius Aps assumes no responsibility for any errors, which may appear in this manual. Furthermore, Cavius Aps reserves the right to alter the hardware, software, and/or specifications detailed herein at any time without notice, and Cavius Aps does not make any commitment to update the information contained herein. All the trademarks listed herein are owned by their respective owners. Copyright © Cavius Aps.

Developed by CAVIUS Aps Julsøvej 16, DK-8600  
 Manufactured in P.R.C.