

CAVIUS UK

WIRELESS.)))

ALARM FAMILY

FLOOD

ALARM

Commercial reference: 5101-003
Developed by CAVIUS

PLEASE READ THE USER GUIDE CAREFULLY BEFORE USE AND RETAIN FOR FUTURE USE!

The Flood Alarm is designed to detect a leak of water from washing machines, water pipes or under-sink cabinets. It can also be used to detect flooded basements.

TECHNICAL INFORMATION:

The maximum number of alarms that can be interlinked within a house group is 32.

Please note: These must be alarms from the CAVIUS

WIRELESS.)))

ALARM FAMILY

The distance between interlinked alarms depends on the house layout and they should always be tested after installation. It is not advised to get more than 10m distance between two alarms.

Diameter: 60mm. Height: 37mm.

The alarm is powered by a replaceable 3v CR123A lithium battery.

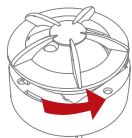
Interlinked by RF: 868 MHz.

Complies to standards: RoHS, REACH, R&TTE (EN300-220-1 and 2), EMC directive 2004/108/EC.

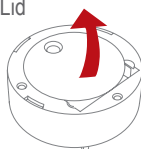


1. HOW TO SET UP AND CONNECT ALARMS:

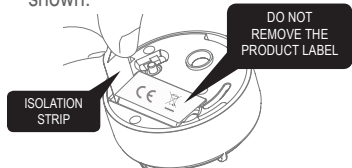
1. Open the flood alarm top cover by twisting counter clockwise.



2. Remove the Test button / Lid to access to the battery and the RF learn slide switch.

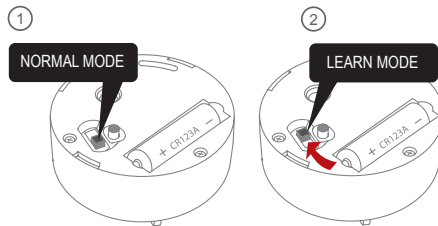


3. Start by pulling out the battery isolation strip as shown.



Please note: The product label must not be removed as it contains important information regarding the product.

All alarms that need to be connected in the house should be put into 'Learn Mode' by sliding the switch on the top of the alarm to the 'Learn mode' position.

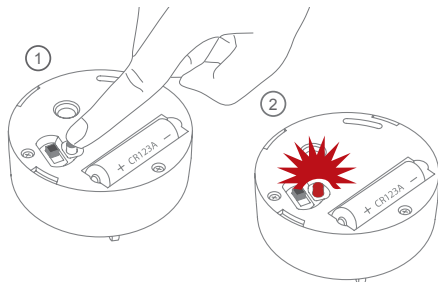


The red LED will light up to indicate that 'Learn Mode' has been selected.



Do not take out the battery during 'Learn Mode' as this will interrupt the learn process.

Press and hold the test button at one alarm only, until it beeps and the LED flashes. This alarm will become the master and will start sending out a specific house code to the other alarms.

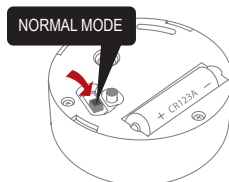


As the other alarms receive the specific house code, they will also flash the LED light.

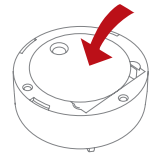


When all alarms flash the red LED, they are connected and can be switched out of 'Learn Mode' and installed.

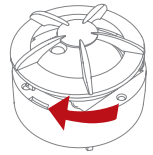
4. Switch out of 'Learn Mode' by sliding the switch on the top of the alarm to the 'Normal mode' position.



5. Remount the Test button / Lid.



6. Close the flood alarm top cover by twisting clockwise.



2. THE BEST AREAS TO INSTALL THE FLOOD ALARM:

- Install a flood alarm where it is hard to discover possible leaks.
- Install next to washing machine, dishwasher, under-sink cabinet or in the cellar.
- Install in basements.

Place the alarm where it is reachable in order to test the battery.



■ Minimum flood alarms ■ Minimum smoke alarms
■ Minimum heat alarms

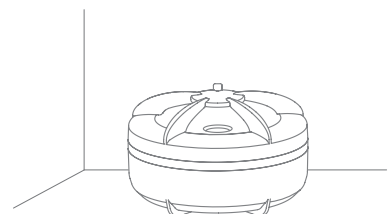
3. AREAS WHERE NOT TO INSTALL FLOOD ALARMS:

- On the ceiling.
- On the wall (unless using accessory wall mounting base, see section 5).
- In rooms where temperature goes outside 0°C to 40°C.

Place the alarm where it is reachable in order to test the battery.

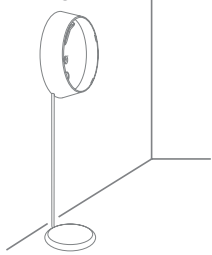
4. PLACEMENT:

The flood alarm is designed to be placed on the floor near to possible leaks.



NOTE: If you place the flood alarm in places where a potential water leak / flood can rise higher than 2cm, there is a risk of your flood alarm being damaged. In these places we recommend wall mounting base with probe.

5. ACCESSORY WALL MOUNTING BASE WITH PROBE:



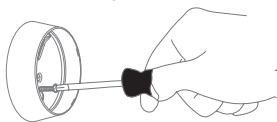
NOTE: The wall mounting base with probe is an accessory option for the flood alarm. It must be purchased separately.

For installation in basements with risk of flooding or areas with difficult accessibility.

Installation with screws and plugs:

Place the flood alarm base on the wall and the probe on the floor.

Make sure that the probe reaches required level either to the ground or down the drain.



USE THE ENCLOSED SCREWS AND PLUGS

Installation with adhesive tape:

1. Choose a suitable spot. Make sure that the mounting area is stable, dry and free of dust and grease. Check that the surface is flat. Once assembled the Mounting base cannot be removed or repositioned.

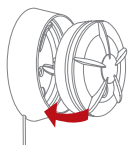
2. Attach the alarm into the socket. Make sure that the alarm has been fitted into the socket properly before you start sticking it to the wall.

3. Remove the protective Foil from the adhesive tape.

4. Mount the socket with the attached alarm to the wall by applying light pressure.

5. Test the alarm according to the users guide of your alarm.

Note: When attached or detaching the alarm from the socket always make sure to secure the socket by holding onto the socket.



Turn the alarm until it clicks all the way in and can't be turned - then it is correct position.

6. TEST FUNCTION:

After installation, and at least once per quarter, test all of your alarms to ensure they are operating correctly and are within range of each other.

It is recommended to check visually every week if the LED flashes correctly (every 48sec.).

Press the test button on any alarm for 2 sweeps of alarm signal 1 (--- --- ---). Please refer to section 8. This will send out a test signal from the alarm; all other connected alarms should receive the signal within a short time. The alarms will emit a short beep and the LED will flash every 8 seconds for 2 minutes.

NOTE: Test function also allows to send a depleted RF signal to ensure an optimal operation in normal conditions.

When the test signal is sent out, the alarms will respond by:

A single beep every 8 seconds to indicate that the alarms are connected and functioning.

If required this indication can be stopped early on each alarm by a short press of the test button.

TIP: It is safe to cover the sound output hole with your finger during the testing to minimize the sound level emitted.

Test of the water leak function:

To test the water leak function, place the flood alarm on a wet cloth and it should go into alarm.

7. NORMAL MODE:

In normal mode the LED will flash every 48 seconds to show correct operation.

8. ALARM MODE:

Flood alarm condition is indicated by a series of repeated tones.

The flood alarm will also transmit the alarm signal to the other connected alarms, which will also sound the alarm signal after a short delay.

The CAVIUS Wireless Family have two different alarm signals:

Alarm signal 1 (--- --- ---) is life threatening alarms, like a smoke alarm.

Alarm signal 2 (- - -) is a non life threatening alarm, like a flooding alarm.

Smoke alarm signal: --- --- ---

Heat alarm signal: --- --- ---

Flood alarm signal: - - -

CO alarm low level signal: - - -

CO alarm high level signal: --- --- ---

Please note that only the originating alarm's LED will flash, so it can be identified.

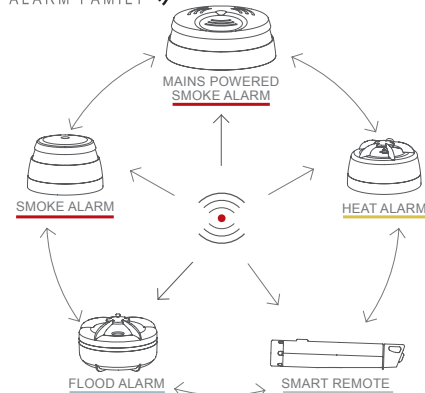
9. PAUSE/HUSH FUNCTION:

Flood alarm can be paused for 10 minutes by pressing the test button on the originating alarm only (indicated by the flashing LED, and after 10 minutes goes back to normal function).

The reason that you can not pause the other alarms, only the originating alarm, is for your own safety. It is necessary to locate the source of the alarm to make sure that it is not a situation that needs your attention.

10. ADD EXTRA DEVICE:

WIRELESS ALARM FAMILY



All CAVIUS interconnected alarms within the **WIRELESS** ALARM FAMILY can be added to the system as they run on the same frequency and use the same

data protocol. This means that the wireless system can consist of a combination of smoke, heat, flood etc.

Place all alarms into 'Learn Mode' and repeat section 1.

Always test connection to all devices by repeating test function section 6 after adding devices.

11. LOW BATTERY SIGNAL:

Your product has a 5Y battery life.

When the battery is starting its end of life, a short beep will sound out every 48 seconds for 30 days.

The alarm effected by the low battery will only beep, no other connected alarms will sound.

It is safe to change batteries in the alarms without going through the learn process again – they will not forget the codes during the battery change process.

12. BATTERY REPLACEMENT:

To replace the battery, detach the cover of the flood alarm by twisting counterclockwise.

Replace the battery respecting the polarities. Put the test button back, close the casing by twisting it clockwise, and test the alarm.



13. TROUBLE SHOOTING:

In case of bad or weak signal, change the location of the flood alarm.

If the flood alarm does not work when the test button is pushed or tested on a damp cloth, the probable cause is a faulty battery. Check if the battery is worn out or wet and replace it. **Always test the alarm after replacement of battery.**

If the problem continues, please visit www.cavius.com for any trouble shooting.

14. OTHER INFORMATION:

Do not paint the alarm.

Note the local country regulations regarding installation.

Disposal: For battery and product, please dispose properly at the end of life. This is electronic waste which should be recycled.

The CE mark affixed to this product confirms its compliance with the European Directives which apply to the product.



All Rights reserved: CAVIUS Aps assumes no responsibility for any errors, which may appear in this manual. Furthermore, CAVIUS Aps reserves the right to alter the hardware, software, and/or specifications detailed herein at any time without notice, and CAVIUS Aps does not make any commitment to update the information contained herein. All the trademarks listed herein are owned by their respective owners. Copyright © CAVIUS Aps.