

CAVIUS UK

WIRELESS

ALARM FAMILY

SMART

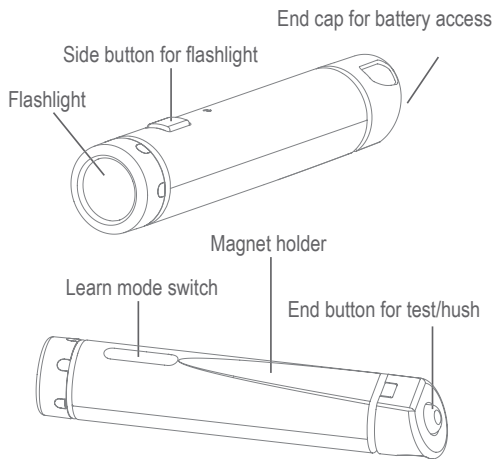
REMOTE

Model no.: 9001

PLEASE READ THE USER GUIDE CAREFULLY BEFORE USE AND RETAIN FOR FUTURE USE!

GENERAL DESCRIPTION

The Smart Remote is designed to alert with a rapid flashing warning light when alarming and to remotely control the CAVIUS Wireless Alarm Family. The torch function can be used to find escape routes at night.



SAFETY INSTRUCTIONS

Batteries are to be handled with care and battery powered devices should be kept out of reach of children. Do not try to recharge or burn the batteries.

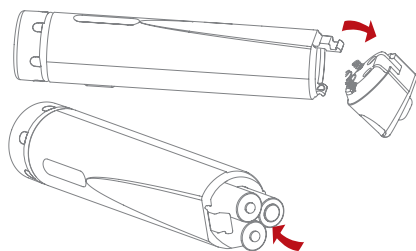
TECHNICAL INFORMATION

The Smart Remote can be used with the alarms from the CAVIUS Wireless Alarm Family: Smoke, Heat, Flood and Mains Power alarms. The maximum number of alarms that can be interlinked with is 32. The minimum range is 100m in open field. RF conditions also depend on the house layout and materials. You should always test it after installation and after changing batteries.

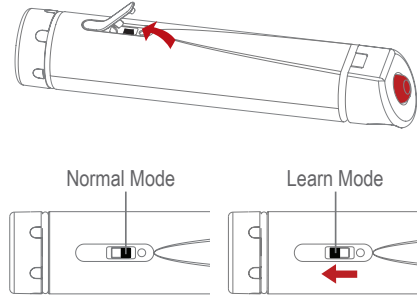
Diameter: 27mm. Length: 140mm.

The Smart Remote is powered by 3 replaceable AAA batteries.

1. HOW TO CONNECT TO THE WIRELESS ALARM FAMILY:



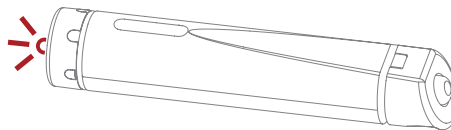
Open the battery compartment by pressing the snap. Insert the batteries in the battery compartment respecting polarities.



Slide the learn switch to the "Learn mode" position. The Smart Remote will go into Learn mode.

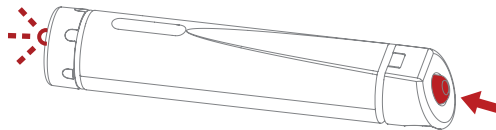
All alarms that need to be connected to the Smart Remote in the house should be put into "Learn mode" by sliding the switch of each device on the "Learn mode" position.

The flashlight will light up to indicate that "Learn mode" has been selected.

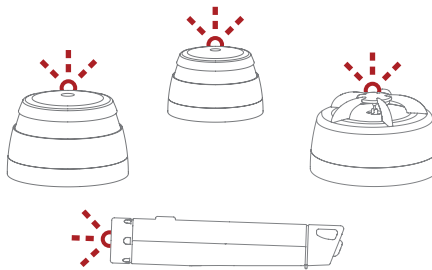


Please note: Do not take out the batteries during "Learn mode" as this will interrupt the learn process.

Press and hold the test button on an alarm, of your own choice, until it beeps and the LED flashes. This alarm will become the master and will start sending out a specific house code to the other alarms.



As the other alarms receive the specific house code, they will also start flashing their red LED's.



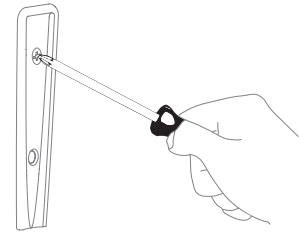
When the red LED light flashes on all alarms, they are connected and **MUST BE SWITCHED OUT OF 'LEARN MODE'** and installed.

Label the original "Learn" alarm in order to easily add new CAVIUS Wireless Family alarms to the system.

2. INSTALLATION:

The body of the Smart Remote has a built-in magnet, so it can be installed on a metal plate mounted on the wall, or on a fridge or other metal surfaces.

The accompanying metal plate can be installed by the double sided tape or the enclosed screw set.



The end cap has a hole in which a lanyard can be added so the remote can hang from a hook etc.

3. TEST FUNCTION:

After installation, and at least once per quarter, test all your alarms by pressing the test button on the remote to ensure they are operating correctly and are within range of each other. It is recommended to check visually every week if the LED flashes correctly on the alarm (every 48sec.).

Hold the red end button for two swipes of alarms until the remote stops flashing, sounding and vibrating.

The remote is now transmitting a test signal to your alarms. During the test, the Smart Remote will flash and sound.

If the Smart Remote is receiving a test signal from another device, it will also flash and sound to indicate that it is part of the group. Indication can be stopped by pressing the end button.

Please note: To ensure an optimal operation in normal conditions, test function sends out a reduced power RF signal.

4. ALARM MODE:

When one of the connected alarms is going into alarm and sending out the RF alarm signal, the Smart Remote's flashlight will start flashing rapidly (stroboscope).

The Smart remote has a built in vibrator and sounder which will follow the sound pattern of the originating alarm. During the alarm, both the sounder and vibrator will be activated.

The torch can be switched from stroboscopic flashing to constant on by pressing the side button.

Please note: Flashlight will flash at 2 Hertz (2 times each second) to avoid photo sensitive epilepsy to be triggered.

The CAVIUS Wireless Family has two different alarm signals:

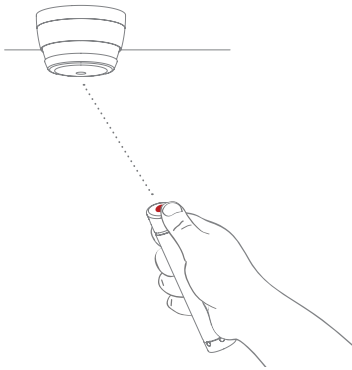
Alarm signal 1 (--- --- ---) is life threatening alarms, like a smoke alarm.

Alarm signal 2 (- - -) is a non life threatening alarm, like a flooding alarm:

Smoke alarm signal: --- --- ---
Heat alarm signal: - - - - -
Flood alarm signal: - - -

Please note that only the originating alarm's LED will flash, so it can be identified.

5. HOW TO HUSH AN ALARM USING THE SMART REMOTE:



When the alarms from the Wireless Alarm Family go into alarm, they can be hushed by a short press on the end button of the Smart Remote.

- During the first 30 seconds of an alarm: Press the red end button once and the remote stops sounding and vibrating, LED is still flashing. The remote is now waiting to send out the hush signal which will start automatically within 30 seconds.
- After 30 seconds of an alarm: Press the red end button once and the remote will send out a hush signal for 13 seconds. If needed to hush several alarms, this can be repeated as many times as necessary.

Please note: Due to coming legislation, the hush signal is transmitted with reduced power (the remote must be within short range from the silenced alarm, which means you should be in the same room as the alarm).

You can hush any of your alarms in the system, as long as you are in in the same room and within short range of the alarm.

You can go from room to room and hush the alarms by short press till you find the originating alarm (the one that flash), then check the cause of alarm. All the others devices will be silenced too.

If you hush an alarm other than the source of the alarm, the remaining alarms will still sound.

6. FLASHLIGHT:

The flashlight can be activated by pressing the side button. By pressing again you turn off the light.

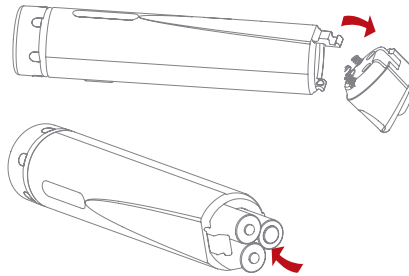
Please note: The light will go out automatically after 5 minutes.

7. LOW BATTERY SIGNAL:

When the battery is starting its end of life, a short beep will sound out every 48 seconds for 30 days. Only the device affected by the low battery will beep, no other connected devices will sound. It is safe to change batteries in the Smart Remote without going through the learn process again – it will not forget the codes during the battery change process.

8. BATTERIES REPLACEMENT:

You can access the 3 x AAA batteries by removing the end cap. Replace the batteries respecting polarities. Always test the Smart Remote after battery replacement.



Caution: There is a risk of explosion if the batteries are replaced by an incorrect type.

9. MAINTENANCE & TROUBLESHOOTING:

If the Smart Remote does not work when the test/hush button is pushed, the probable cause is faulty batteries which must be replaced. Please refer to troubleshooting at www.cavius.com.

10. HOW THE SMART REMOTE IS BEHAVING:

When the remote is:

Receiving a signal from an alarm:
- vibrating, sounding and LED is flashing

Waiting to send a hush signal during the first 30 seconds of an alarm:
- LED is flashing

Sending a hush signal:
- quick vibration, sounding and LED is flashing for 13 seconds

Receiving a test signal:
- quick vibration and LED is flashing

11. OTHER INFORMATION:

Disposal: For battery and product, please dispose properly at the end of life. This is electronic waste which should be recycled.

Complies to the Radio Equipment Directive 2014/53/EU.

Interlinked by RF: 868 MHz.

Maximum radio-frequency power transmitted: 20 mW.

Full DoC to 2014/53/EU (RED) can be downloaded at www.cavius.com

WARNING: All alarms should be assumed as due to actual fire and the dwelling should be evacuated immediately.

WARNING: Batteries shall not be exposed to excessive heat such as shine, fire, or the like. Note the local country regulations regarding installation.

Hereby, Cavius declares that the radio equipment type 9001 is in compliance with Directive 2014/53/EU.

The full text of the EU declaration of conformity is available at the following internet address: www.cavius.com



Carrier assumes no responsibility for any errors, which may appear in this manual. Furthermore, Carrier reserves the right to alter the hardware, software, and/or specifications detailed herein at any time without notice, and Carrier does not make any commitment to update the information contained herein.

Manufacturer: Carrier Fire & Security Danmark A/S, Ellekær 9A, 2. Th, DK-2730. Made in China.