

Test Report

No. : CE/2015/45223

Date : 2015/05/08

Page: 1 of 4

Duracell
Berkshire Corporate Park
14 Research Drive Bethel, CT 06801, USA



The following sample(s) was/were submitted and identified by/on behalf of the applicant as :

Sample Submitted By : DURACELL
Sample Description : DURACELL LITHIUM BATTERY
Style/Item No. : DURACELL ULTRA CR2
Country of Origin : MADE IN INDONESIA
Sample Receiving Date : 2015/04/27
Testing Period : 2015/04/27 TO 2015/05/08

=====
Test Requested : As specified by client, with reference to Directive 2006/66/EC and Amendment 2013/56/EU to determine Cadmium, Lead, Mercury contents in the submitted sample.
Test Result(s) : Please refer to next page(s).
Conclusion : Based upon the performed tests by submitted samples, the test results of Cadmium, Lead, Mercury comply with the limits of 2006/66/EC Directive and Amendment 2013/56/EU.



Nicole Chien / Supervisor
Signed for and on behalf of
SGS TAIWAN LTD.
Chemical Laboratory - Taipei

This document is issued by the Company subject to its General Conditions of Service printed overleaf, available on request or accessible at <http://www.sgs.com/en/Terms-and-Conditions.aspx> and, for electronic format documents, subject to Terms and Conditions for Electronic Documents at <http://www.sgs.com/en/Terms-and-Conditions/Termse-Documents.aspx>. Attention is drawn to the limitation of liability, indemnification and jurisdiction issues defined therein. Any holder of this document is advised that information contained hereon reflects the Company's findings at the time of its intervention only and within the limits of client's instruction, if any. The Company's sole responsibility is to its Client and this document does not exonerate parties to a transaction from exercising all their rights and obligations under the transaction documents. This document cannot be reproduced, except in full, without prior written approval of the Company. Any unauthorized alteration, forgery or falsification of the content or appearance of this document is unlawful and offenders may be prosecuted to the fullest extent of the law. Unless otherwise stated the results shown in this test report refer only to the sample(s) tested.

Test Report

No. : CE/2015/45223

Date : 2015/05/08

Page: 2 of 4

Duracell
 Berkshire Corporate Park
 14 Research Drive Bethel, CT 06801, USA



Test Result(s)

PART NAME No.1 : BATTERY

Test Item(s)	Unit	Method	MDL	Result	Limit
				No.1	
Cadmium (Cd)	mg/kg	With reference to Battery Industry Standard Analytical Method, EPBA · BAJ · NEMA, April 1998 and performed by ICP-AES.	2	n.d.	20
Lead (Pb) (*)	mg/kg	With reference to Battery Industry Standard Analytical Method, EPBA · BAJ · NEMA, April 1998 and performed by ICP-AES.	2	n.d.	40
Mercury (Hg)	mg/kg	With reference to Battery Industry Standard Analytical Method, EPBA · BAJ · NEMA, April 1998 and performed by ICP-AES.	1	n.d.	5 (#)

Note :

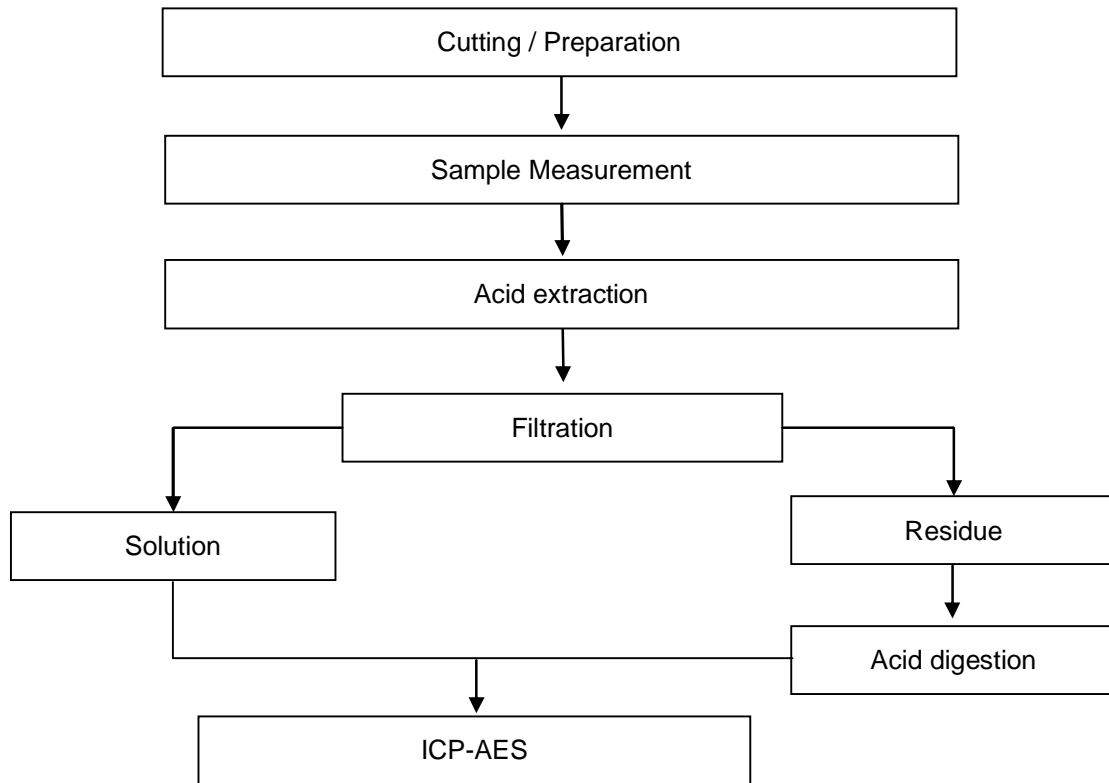
1. mg/kg = ppm ; 0.1wt% = 1000ppm
2. n.d. = Not Detected
3. MDL = Method Detection Limit
4. (*): According to the Directive, batteries, accumulators and button cells containing more than 40ppm lead shall be marked with the chemical symbol for the metal concerned: Pb.
5. (#): The exemption for button cells having a mercury content of maximum 2% (20000 mg/kg) by weight will phase out from 1 October 2015.

Duracell
 Berkshire Corporate Park
 14 Research Drive Bethel, CT 06801, USA



Flow Chart of heavy metal analysis for battery

- Name of the person who made measurement: Climbgreat Yang
- Name of the person in charge of measurement: Troy Chang



This document is issued by the Company subject to its General Conditions of Service printed overleaf, available on request or accessible at <http://www.sgs.com/en/Terms-and-Conditions.aspx> and, for electronic format documents, subject to Terms and Conditions for Electronic Documents at <http://www.sgs.com/en/Terms-and-Conditions/Termse-Document.aspx>. Attention is drawn to the limitation of liability, indemnification and jurisdiction issues defined therein. Any holder of this document is advised that information contained hereon reflects the Company's findings at the time of its intervention only and within the limits of client's instruction, if any. The Company's sole responsibility is to its Client and this document does not exonerate parties to a transaction from exercising all their rights and obligations under the transaction documents. This document cannot be reproduced, except in full, without prior written approval of the Company. Any unauthorized alteration, forgery or falsification of the content or appearance of this document is unlawful and offenders may be prosecuted to the fullest extent of the law. Unless otherwise stated the results shown in this test report refer only to the sample(s) tested.

Test Report

No. : CE/2015/45223

Date : 2015/05/08

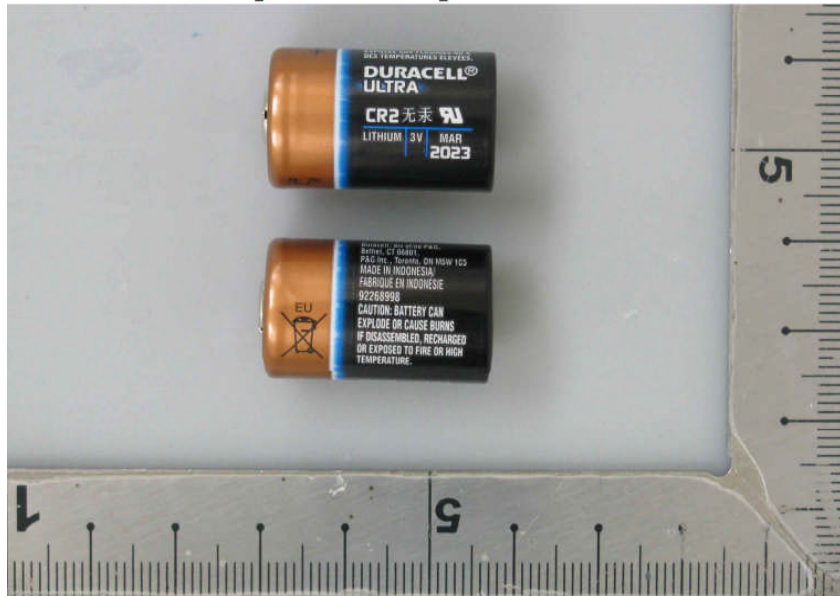
Page: 4 of 4

Duracell
Berkshire Corporate Park
14 Research Drive Bethel, CT 06801, USA



* The tested sample / part is marked by an arrow if it's shown on the photo. *

CE/2015/45223



** End of Report **